


Document Name: How to remove peel ply				Rock West 
Document No: RW-PS-109	Date: 05/24/2022	Revision: NC	Page: Page 1 of 5	

AMENDMENT RECORD

Rev	Revision Author	Revision Notes	Date Released
NC	Taylor Ashton	Original	4/27/2022

Purpose: *This document defines the best practice for removing peel ply from an infused plate.*

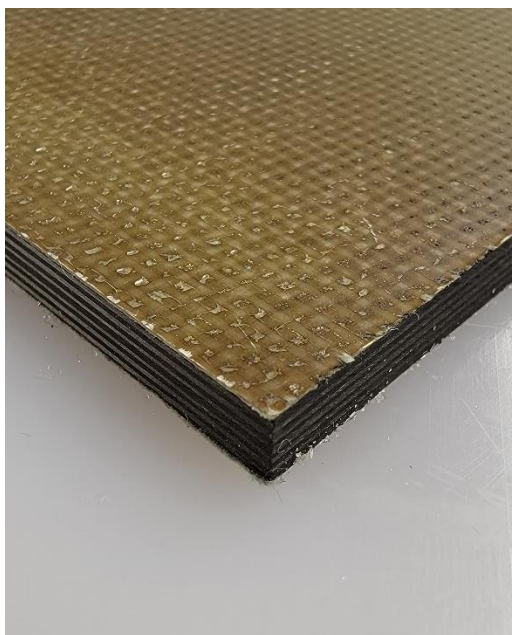
Materials:


1. Exacto knife or Razor blade
2. Microfiber cloth

Process:

1. Clean peel ply plate
 - 1.1 Use a clean cloth to wipe off the peel ply surface.
2. Cut Peel ply
 - 2.1 Caution:

It is especially important NOT to separate the peel ply from the plate starting at the corners. Separating from the corners can lead to plate delamination.

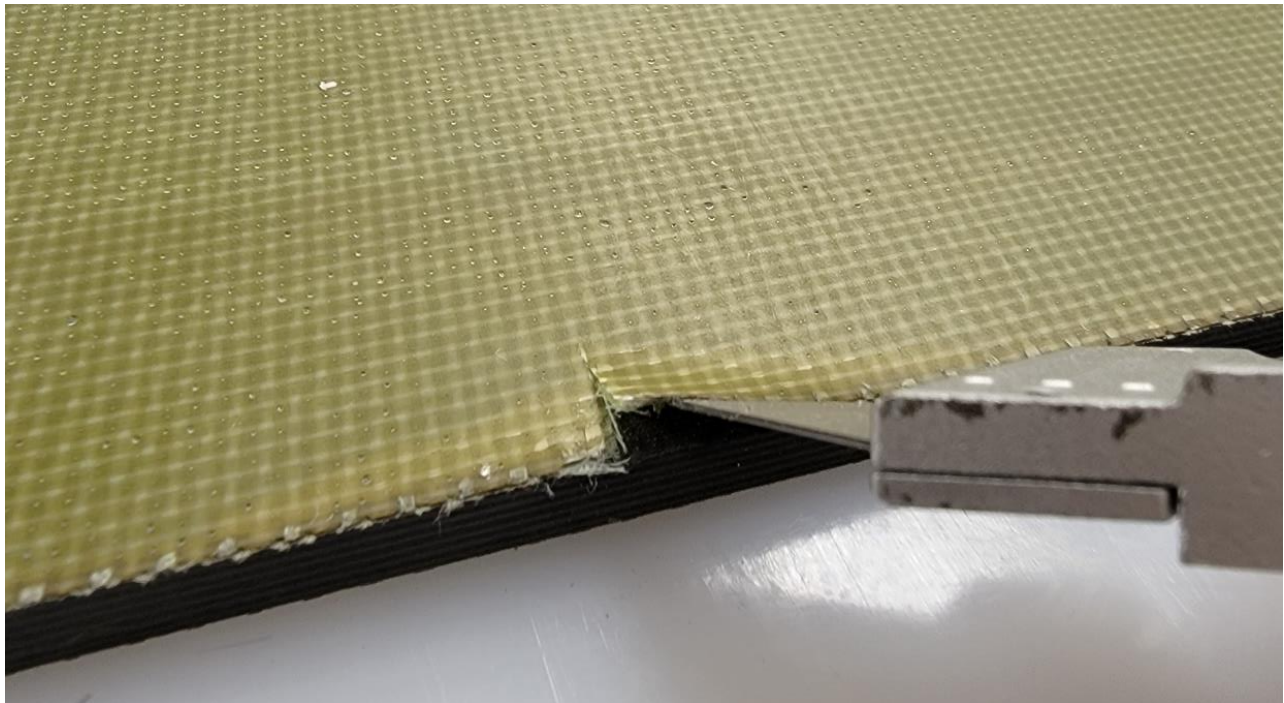



Document Name: How to remove peel ply				RockWest 
Document No: RW-PS-109	Date: 05/24/2022	Revision: NC	Page: Page 2 of 5	

- 2.2** Place plate with the peel ply surface face up. Starting in the center of the plate edge. Make a shallow cut with the sharp edge of the razor blade. Cut just deep enough to get through the peel ply on the plate.



- 2.3** Using the dull side of the razor blade scrape near the cut and separate the peel ply from the carbon plate.



Document Name: How to remove peel ply				RockWest 
Document No: RW-PS-109	Date: 05/24/2022	Revision: NC	Page: Page 3 of 5	

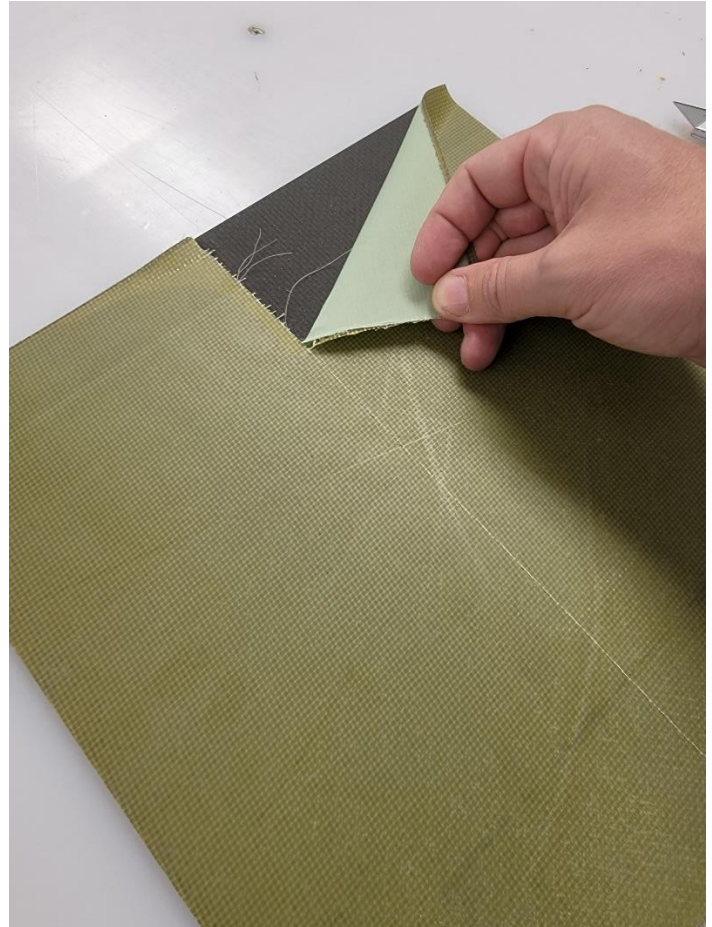
2.4 Separate the peel ply


2.4.1 Lightly score the peel ply down the center of the plate.

2.4.1.1 DO NOT CUT ALL THE WAY THROUGH THE PEEL PLY

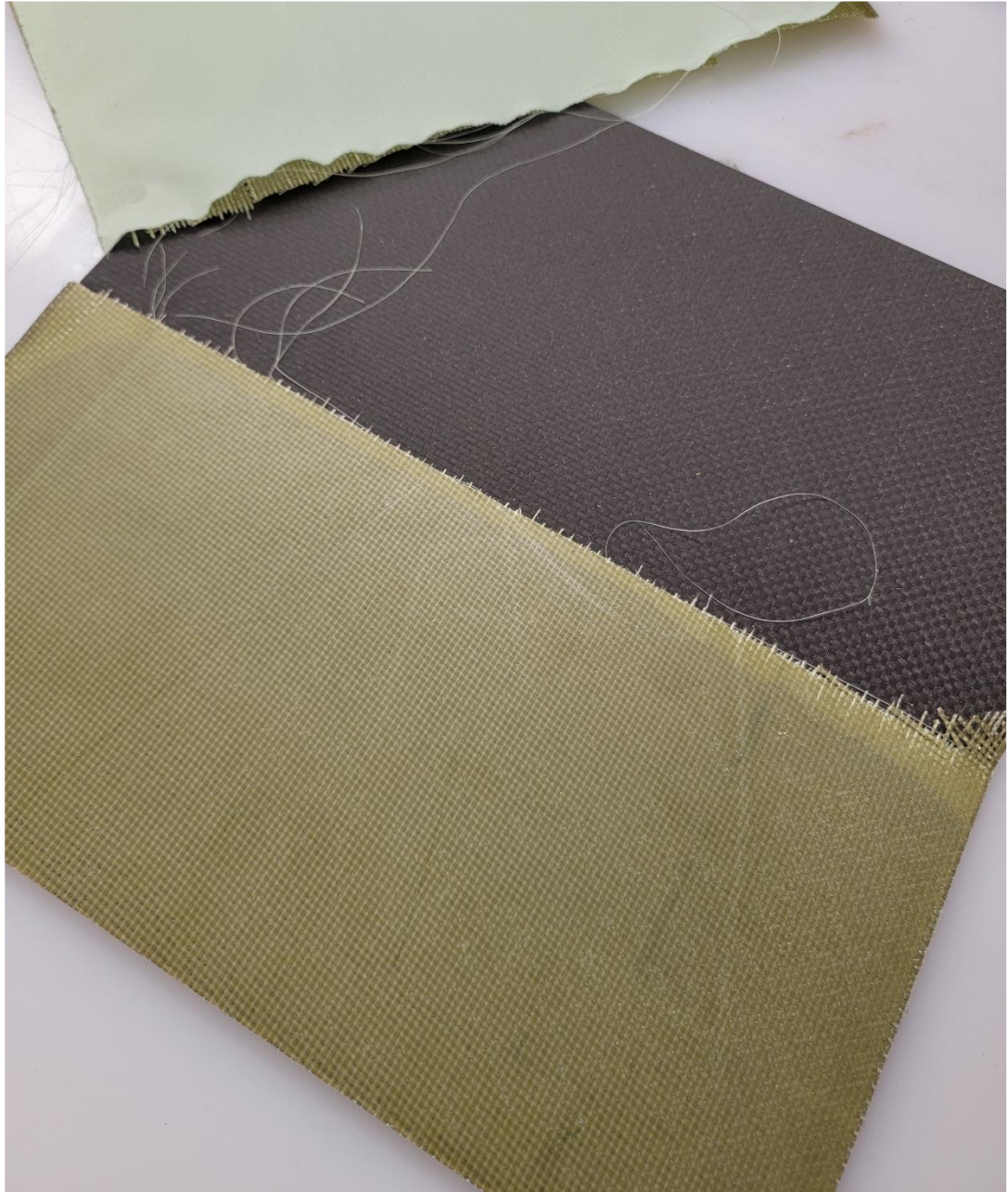
2.4.2 Grab one corner of the cut and pull down and away from the center.


2.4.2.1 DO NOT PULL FROM THE PLATE CORNERS



Document Name: How to remove peel ply				RockWest 
Document No: RW-PS-109	Date: 05/24/2022	Revision: NC	Page: Page 4 of 5	

- 2.4.3** Repeat the removal with the remaining peel ply material on the plate. Pull from the center of the plate to the edge.



Document Name: How to remove peel ply				RockWest 
Document No: RW-PS-109	Date: 05/24/2022	Revision: NC	Page: Page 5 of 5	

3. Check the plate to ensure all the peel ply has been removed.

3.1 Using a clean cloth and wipe off plate

