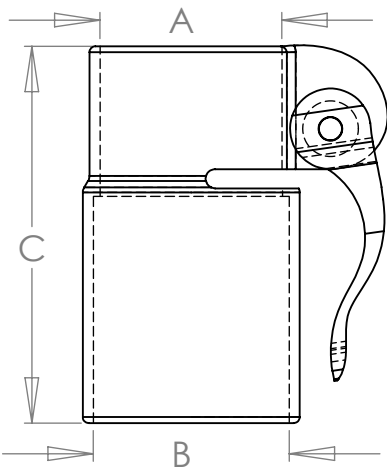
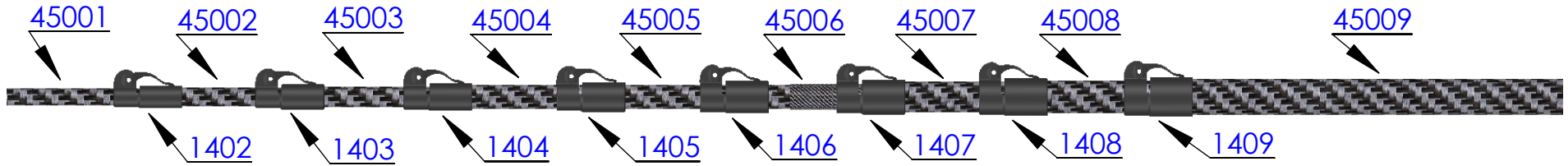
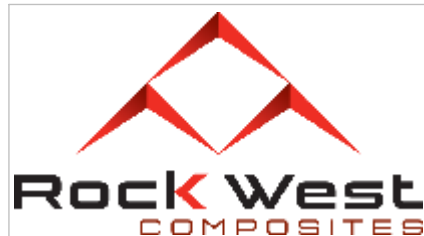
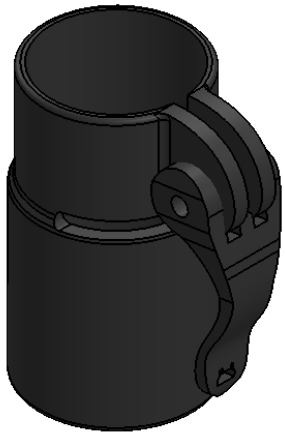
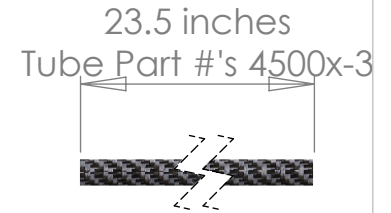
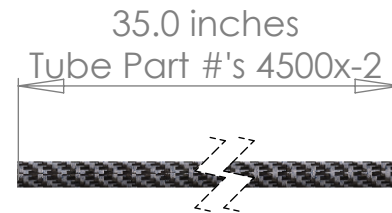
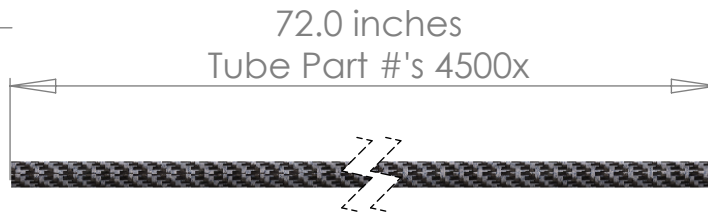
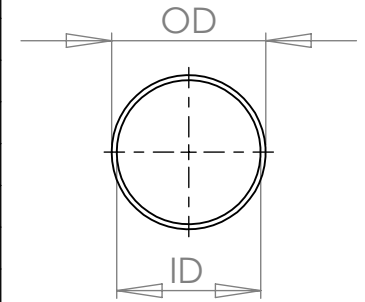


REVISIONS			
REV.	DESCRIPTION	DATE	APPROVED
A	TELESCOPING TUBING #'s 45001 - 45009	NA	NA
A	TELESCOPING CLAMPS #'s 1402 - 1409	NA	NA



Clamp Part #	A (inches)	B (inches)	C (inches)
1402	0.91	1.07	4.0
1403	1.03	1.20	4.0
1404	1.19	1.34	4.0
1405	1.33	1.48	4.0
1406	1.47	1.62	4.0
1407	1.61	1.76	4.0
1408	1.75	1.90	4.0
1409	1.89	2.04	4.0

Tube Part #	ID (inches)	OD (inches)
45001	0.875	0.935
45002	0.983	1.055
45003	1.101	1.185
45004	1.250	1.334
45005	1.375	1.471
45006	1.500	1.603
45007	1.625	1.733
45008	1.750	1.858
45009	1.875	2.007



**PROPRIETARY AND CONFIDENTIAL**  
 THE INFORMATION CONTAINED IN THIS DRAWING IS THE SOLE PROPERTY OF ROCK WEST COMPOSITES. ANY REPRODUCTION IN PART OR AS A WHOLE WITHOUT THE WRITTEN PERMISSION OF ROCK WEST COMPOSITES IS PROHIBITED.

UNLESS OTHERWISE SPECIFIED:  
 DIMENSIONS ARE IN INCHES  
 TOLERANCES:  
 FRACTIONAL ±1/32  
 ANGULAR: MACH ±0.2 BEND ±2  
 ONE PLACE DECIMAL ±0.25  
 TWO PLACE DECIMAL ±0.05  
 THREE PLACE DECIMAL ±0.01

INTERPRET GEOMETRIC TOLERANCING PER: ASME Y14.5 - 2009

MATERIAL: VARIOUS  
 FINISH:

DO NOT SCALE DRAWING

	NAME	DATE
DRAWN	NA	NA
CHECKED		
ENG APPR.	NA	NA
MFG APPR.		
Q.A.		

COMMENTS:

TITLE:  
**Fully Assembled Set**

SIZE <b>A</b>	DWG. NO. NA	REV <b>B</b>
SCALE: NA	WEIGHT:	SHEET 1 OF 1