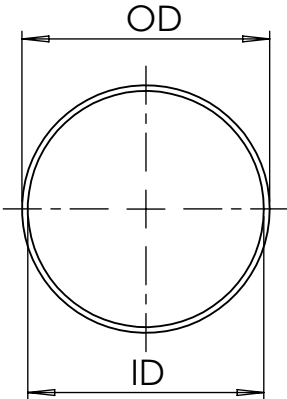
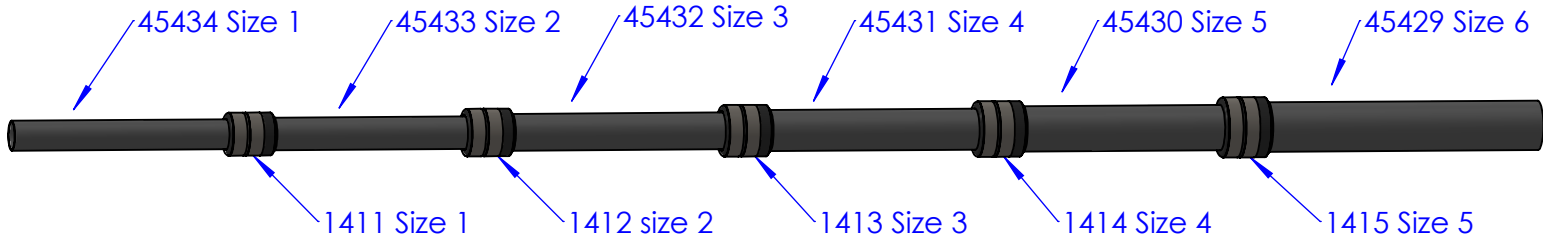
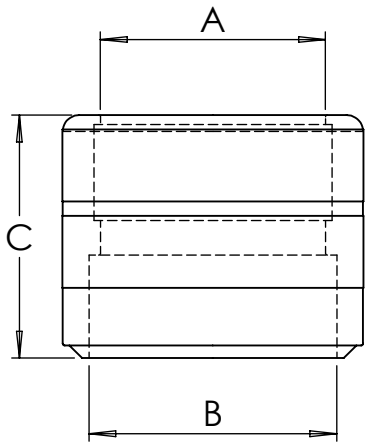


REVISIONS			
REV.	DESCRIPTION	DATE	APPROVED
NC	INITIAL RELEASE	4/3/17	BTL



**Available as Fully Assembled Telescoping Systems**



SMALL  
MEDIUM  
LARGE  
EXTRA LARGE

Clamp Part #	Clamp "Size"	A (inches)	B (inches)	C (inches)
1411	1	0.774	0.853	1.283
1412	2	0.844	0.960	1.278
1413	3	0.971	1.076	1.323
1414	4	1.062	1.184	1.268
1415	5	1.189	1.294	1.303

Tube Part #	Tube "Size"	ID (inches)	OD (inches)	Shortest Length	Longest Length
45434	1	0.709	0.780	25	80
45433	2	0.790	0.850	32	67
45432	3	0.900	0.960	32	67
45431	4	1.101	1.070	32	67
45430	5	1.120	1.180	32	67
45429	6	1.230	1.290	32	67



**PROPRIETARY AND CONFIDENTIAL**  
THE INFORMATION CONTAINED IN THIS DRAWING IS THE SOLE PROPERTY OF ROCK WEST COMPOSITES. ANY REPRODUCTION IN PART OR AS A WHOLE WITHOUT THE WRITTEN PERMISSION OF ROCK WEST COMPOSITES IS PROHIBITED.

UNLESS OTHERWISE SPECIFIED:  
DIMENSIONS ARE IN INCHES  
TOLERANCES:  
FRACTIONAL ±1/32  
ANGULAR: MACH±0.2 BEND ±2  
ONE PLACE DECIMAL ±0.05  
TWO PLACE DECIMAL ±0.005  
THREE PLACE DECIMAL ±0.001

INTERPRET GEOMETRIC TOLERANCING PER: ASME Y14.5 - 2009

MATERIAL  
See "Comments"

FINISH  
See "Comments"

DO NOT SCALE DRAWING

	NAME	DATE
DRAWN	BTL	4/3/17
CHECKED	BTL	
ENG APPR.	BTL	4/3/17
MFG APPR.	NA	NA
Q.A.	NA	NA

TITLE:

**INFINITubeUL System**

COMMENTS:  
Available Materials and Finishes

- Standard Modulus
- Unidirectional
- Sanded

Sheet: 1	DWG. NO. 0391	REV NC
SCALE: Multiple	WEIGHT: NA	SHEET 1 OF 1