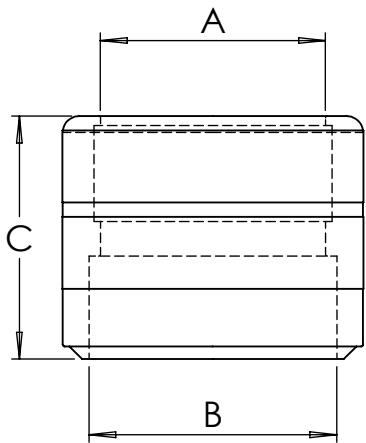
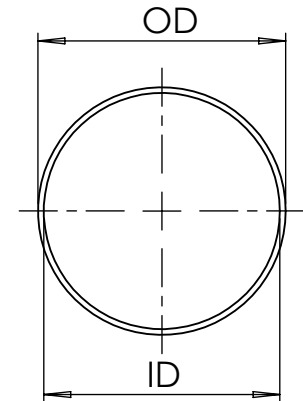
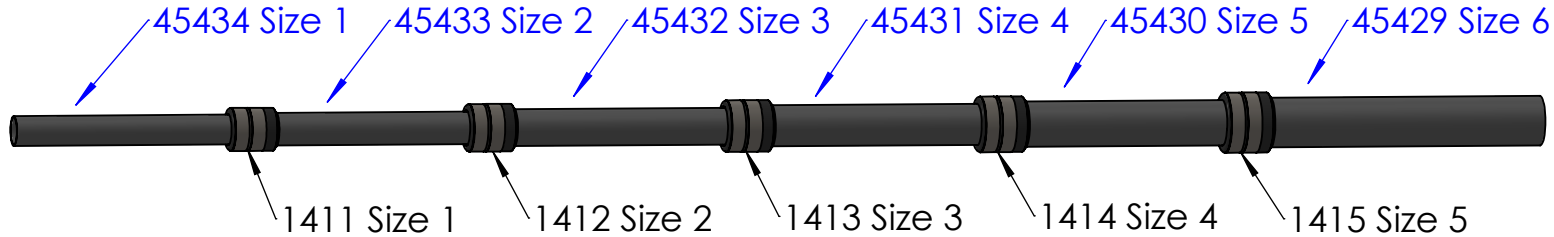


REVISIONS			
REV.	DESCRIPTION	DATE	APPROVED
NC	INITIAL RELEASE	4/3/17	BTL
A	Corrected size 4 diameters and compression ring diameters, updated hyperlinks, removed some fully assembled sizes that are no longer offered	6/29/2020	ASC

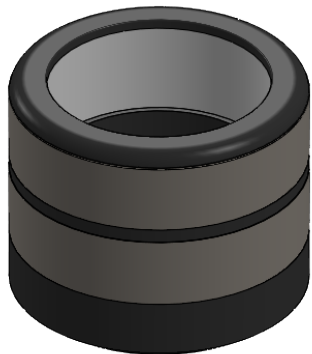


Available in Multiple Sizes as Fully Assembled Telescoping Systems:

LARGE
EXTRA LARGE

Clamp Part #	Clamp "Size"	A (inches)	B (inches)	C (inches)
1411	1	0.800	0.858	1.283
1412	2	0.912	0.968	1.278
1413	3	1.020	1.080	1.323
1414	4	1.140	1.188	1.268
1415	5	1.248	1.310	1.303

Tube Part #	Tube "Size"	ID (inches)	OD (inches)	Shortest Length	Longest Length
45434	1	0.709	0.780	25	80
45433	2	0.790	0.850	28	67
45432	3	0.900	0.960	28	67
45431	4	1.010	1.070	28	67
45430	5	1.120	1.180	28	67
45429	6	1.230	1.290	28	67



Compression Ring Clamps



PROPRIETARY AND CONFIDENTIAL

THE INFORMATION CONTAINED IN THIS DRAWING IS THE SOLE PROPERTY OF ROCK WEST COMPOSITES. ANY REPRODUCTION IN PART OR AS A WHOLE WITHOUT THE WRITTEN PERMISSION OF ROCK WEST COMPOSITES IS PROHIBITED.

UNLESS OTHERWISE SPECIFIED:

DIMENSIONS ARE IN INCHES
TOLERANCES:
FRACTIONAL ±1/32
ANGULAR: MACH ±0.2 BEND ±2
ONE PLACE DECIMAL ±0.05
TWO PLACE DECIMAL ±0.01
THREE PLACE DECIMAL ±0.005

INTERPRET GEOMETRIC TOLERANCING PER: ASME Y14.5 - 2009

MATERIAL See "Comments"

FINISH See "Comments"

DO NOT SCALE DRAWING

	NAME	DATE
DRAWN	BTL	4/3/17
CHECKED	BTL	
ENG APPR.	BTL	4/3/17
MFG APPR.	NA	NA
Q.A.	NA	NA

COMMENTS:
Available Materials and Finishes
- Standard Modulus (sanded)
- Unidirectional
- Twill

TITLE:

INFINITubeUL System

Sheet: 1	DWG. NO. 0391	REV A
SCALE: Multiple	WEIGHT: NA	SHEET 1 OF 1