

Engineered Carbon Fiber Stock Products

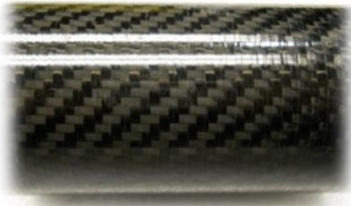
- 33% lighter than aluminum
- 1.5x Stiffer than aluminium
- Great cyclic durability
- Aesthetically pleasing



Fabric Carbon Tubing

- Comprised of 0°, 90°, and sometimes ±45° plies with an outer ply of 2x2 *twill* fabric
- Benefits include easier machinability for drilling holes with minimum splintering, Woven look

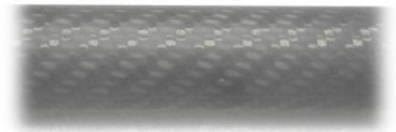
Cello-wrap (gloss) - Unsanded



Unsanded and Sanded



Smooth (satin) - Sanded



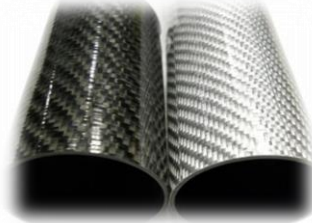
Fabric Twill Texalium Tubing

- Same product as our fabric tubing but instead of a carbon outer ply, we use a silver texalium *twill* fabric
- Unique look

Cello-wrap (gloss) - Unsanded



Carbon Twill and Twill Texalium



Smooth (satin) - Sanded

No Photo

Unidirectional Carbon Tubing

- Comprised of 0°, 90°, and sometimes ±45° plies with an outer 0° ply
- Marginally stiffer than the fabric carbon tubing (though not in every case)
- Great for use as ferrules or in joining of two tubes (must be sanded to bond)

Cello-wrap (gloss) - Unsanded



Sanded and Unsanded



Smooth (satin) - Sanded



Unidirectional Carbon Bicycle Tubing

- Comprised mostly of ±30° and or ±45° plies with an outer 0° ply
- Designed specifically for application in bicycle frames, sanded and ready for bonding
- Great for use as ferrules or in joining of two tubes

Smooth (satin) - Sanded



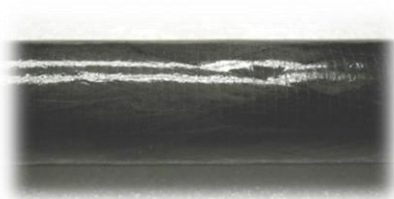
Ferrule



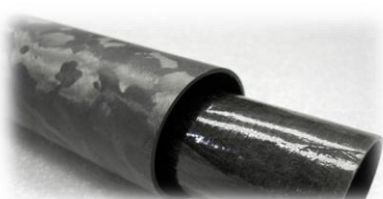
Filament Wound Carbon Tubing

- Comprised of various angled plies ±15° to ±90° with an average value ~ ±35°
- Great for torque applications
- Most stock FW tubing is sanded and available by the foot - Pricing is by the foot

Cello-wrap (gloss) - Unsanded



Sanded and Unsanded



Smooth (satin) - Sanded



Telescoping Tubing

- 4 sizes, Lockable at any length, Rubberized butt, Threaded head 3/8"-16
- 19"- 73" small
- 26"- 99" medium
- 36"- 148" large
- 48"- 204" extra large



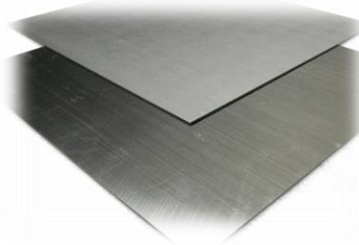
Unidirectional Carbon Plates - No Fabric plates at this time

- 2 Unidirectional finishes available - Glossy and Peel Ply (matte)
- 3 layup options available - See product description on website for layup
- Easy to cut on waterjet (be sure to give adequate "lead-in" for the initial pierce into material)

Glossy



Glossy and Peel Ply



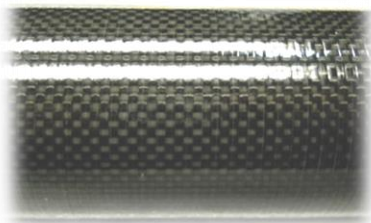
Peel Ply



Plain Weave Carbon Fiber Fabric

- We do not produce stock tubes with this finish
- Benefits include easier machinability for drilling holes with minimum splintering, Woven look
- Often available as over run products on our website

Cello-wrap (gloss) - Unsanded



Unsanded and Sanded



Smooth (satin) - Sanded

