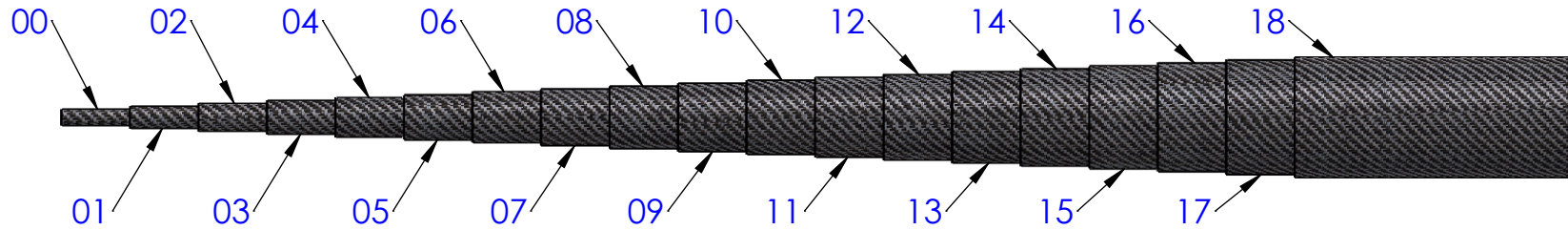


1

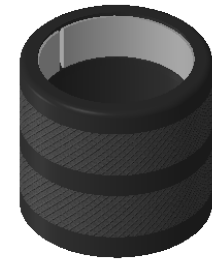
2

3

4



Tube Group SKU #	ID (inches)	OD (inches)	"Size"	Shortest Stock Length *	Longest Stock Length †	Button Clip Part #	Ball Lock Pin Part #	Compression Ring Part #
46400	0.250	0.352	00	30	62	N/A	B-25-050	CR-INFV-00-01
46401	0.375	0.476	01	30	91	1137-SS	B-25-050	CR-INFV-01-02
46402	0.500	0.601	02	36	82	1137-SS	B-25-075	CR-INFV-02-03
46403	0.625	0.731	03	36	74	1139-SS	B-25-075	CR-INFV-03-04
46404	0.750	0.856	04	36	74	1139-SS	B-25-100	CR-INFV-04-05
46405	0.875	0.981	05	36	74	1140-SS	B-25-100	CR-INFV-05-06
46406	1.000	1.106	06	36	74	1140-SS	B-25-125	CR-INFV-06-07
46407	1.125	1.231	07	36	74	1140-SS	B-25-125	CR-INFV-07-08
46408	1.250	1.356	08	36	74	1141-SS	B-25-150	CR-INFV-08-09
46409	1.375	1.481	09	36	74	1141-SS	B-25-150	CR-INFV-09-10
46410	1.500	1.606	10	36	74	1142-SS	B-25-175	CR-INFV-10-11
46411	1.625	1.731	11	36	74	1142-SS	B-25-175	CR-INFV-11-12
46412	1.750	1.856	12	36	74	1142-SS	B-25-200	CR-INFV-12-13
46413	1.875	1.981	13	36	74	1142-SS	B-25-200	CR-INFV-13-14
46414	2.000	2.106	14	36	74	1142-SS	B-25-250	CR-INFV-14-15
46415	2.125	2.231	15	36	74	1142-SS	B-25-250	CR-INFV-15-16
46416	2.250	2.356	16	36	74	1142-SS	B-25-250	CR-INFV-16-17
46417	2.375	2.481	17	36	74	N/A	B-25-250	CR-INFV-17-18
46418	2.500	2.606	18	36	74	N/A	B-25-300	



[Compression Ring](#)



[Button Clip](#)

[Ball Lock Pin](#)

Note - Button clips are not recommended if more than two tubes are used

\* All tubes can be cut to shorter lengths upon request

† Longer lengths may be available in filament wound style

#### Available Materials and Finishes:

- Standard Modulus
  - Twill Weave
  - Ekoa (Flax Fiber)
  - Filament Wound
- Intermediate Modulus
  - Spread Tow (Plain Weave)
- High Modulus
  - 3k Plain Weave
- Fiberglass



**PROPRIETARY AND CONFIDENTIAL**  
THE INFORMATION CONTAINED IN THIS DRAWING IS THE SOLE PROPERTY OF ROCK WEST COMPOSITES. ANY REPRODUCTION IN PART OR AS A WHOLE WITHOUT THE WRITTEN PERMISSION OF ROCK WEST COMPOSITES IS PROHIBITED.

UNLESS OTHERWISE SPECIFIED:

DIMENSIONS ARE IN INCHES

TOLERANCES ARE SPECIFIED BY:

[RW-PS-071 - Stock Tube Tolerance Sheet](#)

MATERIAL:  
See Notes to The Left

FINISH:  
See Notes to The Left

DO NOT SCALE DRAWING

	NAME	DATE
DRAWN	ASC	1/10/2019
CHECKED	RH	
ENG APPR.	RH	
MFG APPR.	N/A	N/A
Q.A.	N/A	N/A

TITLE:

**INFINITubeV  
System - REV C**

SHEET:

Sheet1

DWG. #

0390

REV

C

SCALE: Multiple WEIGHT: N/A SHEET 1 OF 2

1

2

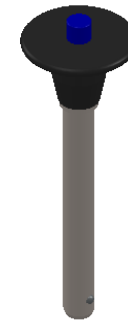
3

4

# INFINITubeV

## Large Diameter Lineup

Tube Group SKU #	ID (inches)	OD (inches)	"Size"	Stock Length *	Ball Lock Pin Part #
46420	2.750	2.760	20	96	B-25-300
45422	3.000	3.010	22	90	B-25-350
45424	3.250	3.260	24	96	B-25-350
46426	3.500	3.510	26	96	B-25-400
46428	3.750	3.760	28	84	B-25-400
46430	4.000	4.010	30	96	N/A



Ball Lock Pin

\* All tubes can be cut to shorter lengths upon request

### Available Materials and Finishes:

- Standard Modulus
  - Twill Weave
- High Modulus
  - 3k Plain Weave



**PROPRIETARY AND CONFIDENTIAL**  
 THE INFORMATION CONTAINED IN THIS DRAWING IS THE SOLE PROPERTY OF ROCK WEST COMPOSITES. ANY REPRODUCTION IN PART OR AS A WHOLE WITHOUT THE WRITTEN PERMISSION OF ROCK WEST COMPOSITES IS PROHIBITED.

UNLESS OTHERWISE SPECIFIED:  
 DIMENSIONS ARE IN INCHES  
 TOLERANCES ARE SPECIFIED BY:  
[RW-PS-071 - Stock Tube Tolerance Sheet](#)

MATERIAL: See Notes to The Left

FINISH: See Notes to The Left

DO NOT SCALE DRAWING

	NAME	DATE
DRAWN	ASC	1/10/2019
CHECKED	RH	
ENG APPR.	RH	
MFG APPR.	N/A	N/A
Q.A.	N/A	N/A

COMMENTS:  
 Additional sizes and finishes may be available upon request

TITLE:  
**INFINITubeV System - REV C**

SHEET: Sheet2	DWG. # 0390	REV C
---------------	-------------	-------

SCALE: Multiple WEIGHT: N/A SHEET 2 OF 2

1

2

3

4