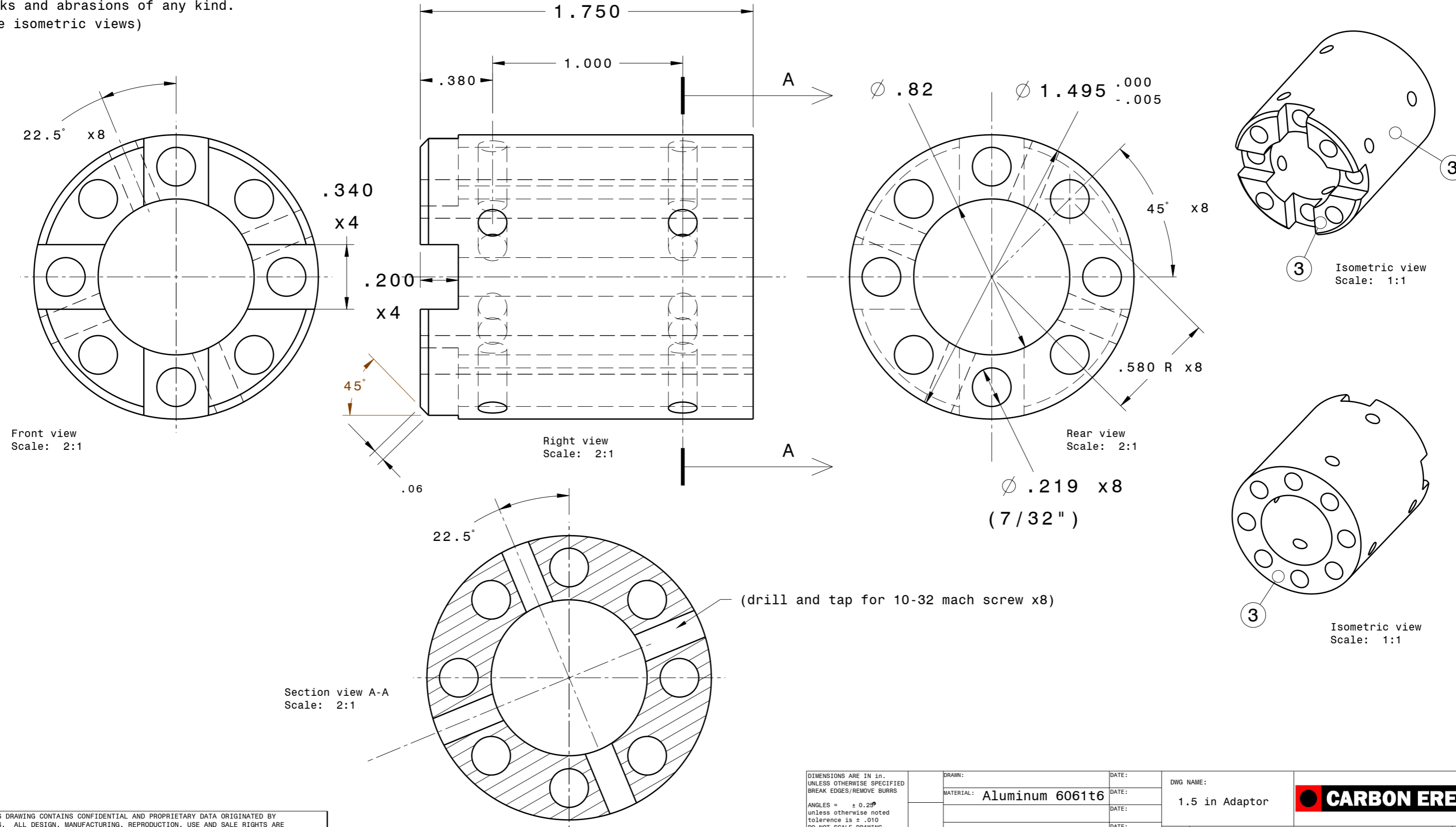


NOTES: UNLESS OTHERWISE SPECIFIED

- 1. ALL SURFACES AND LOFTS ARE DERIVED FROM CATIA V5 SOLID MODEL "....."
THE CATIA SOLID MODEL IS THE MASTER AND CONTROLS ALL DIMENSIONS, UNLESS OTHERWISE SPECIFIED.
ENGINEERING WILL SUPPLY ALL LOFTED DATA UPON REQUEST.
- 2. All surfaces to be "as machined"
- 3. Noted surfaces shall be free from scratches, marks and abrasions of any kind.
(see isometric views)

REVISIONS			
REV	DESCRIPTION	DATE	APPVD
A	rotate eight threaded side holes 22.5deg	02/22/15	JAL



NOTICE: THIS DRAWING CONTAINS CONFIDENTIAL AND PROPRIETARY DATA ORIGINATED BY METALCRAFTERS. ALL DESIGN, MANUFACTURING, REPRODUCTION, USE AND SALE RIGHTS ARE EXPRESSLY RESERVED. THE RECIPIENT AGREES BY ACCEPTING THIS DOCUMENT NOT TO SUPPLY OR DISCLOSE ANY INFORMATION REGARDING IT TO ANY UNAUTHORIZED PERSON OR TO INCORPORATE THIS DATA INTO ANY OTHER DESIGN OR USE THEREOF. ALL PATENT RIGHTS ARE EXPRESSLY RESERVED.

DIMENSIONS ARE IN in. UNLESS OTHERWISE SPECIFIED BREAK EDGES/REMOVE BURRS	DRAWN:	DATE:	DWG NAME:	CARBON ERECTOR
	MATERIAL: Aluminum 6061t6	DATE:	1.5 in Adaptor	
ANGLES = $\pm 0.25^\circ$ unless otherwise noted tolerance is $\pm .010$ DO NOT SCALE DRAWING	SCALE:	DATE:	SHEET: DWG NO:	REV: A
CAGE CODE: N/A	2 to 1	DATE:	B CE15-AD-01	SHEET: 1 OF 1